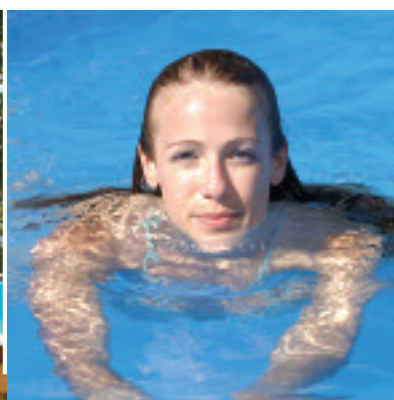


## 6m x 4m Wooden Pool



## Endless Summer Wooden Pools Pool Build Procedure

*Superior wooden pools, built to the highest quality - at affordable prices.*



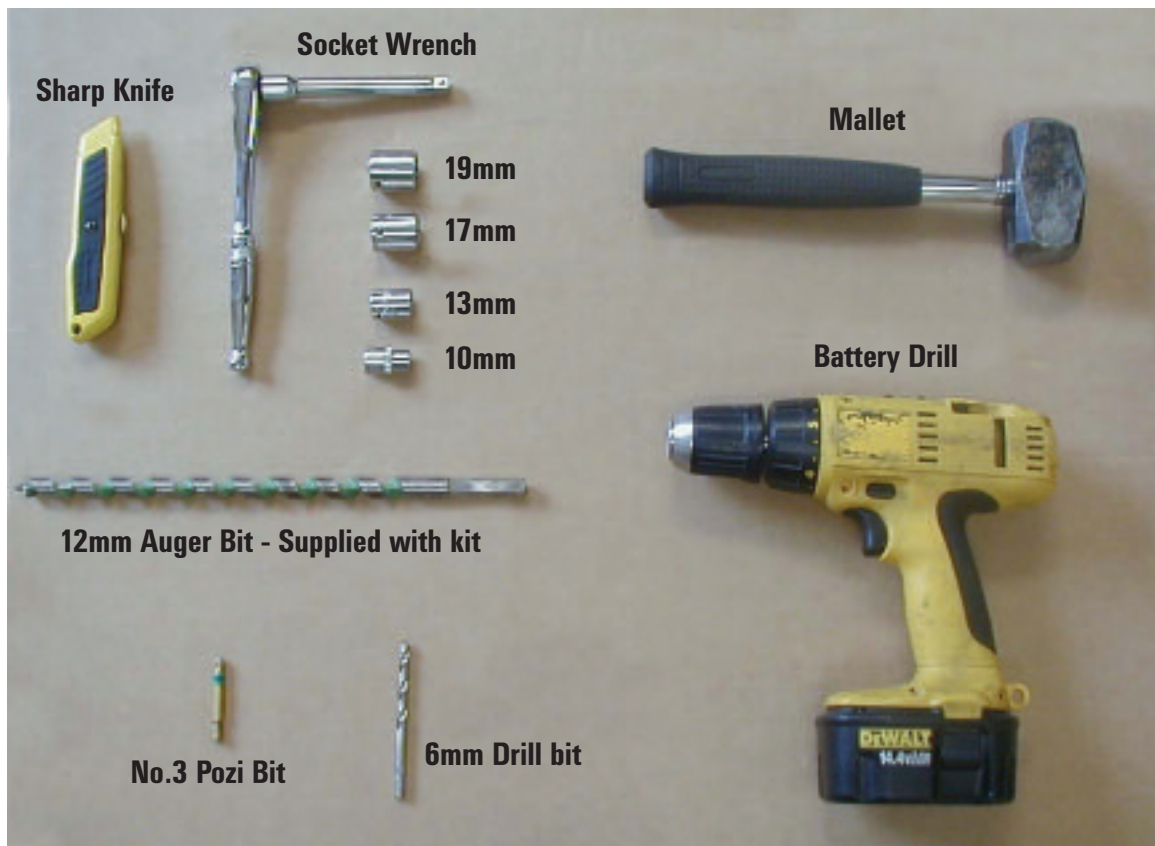
**Certikin**  
*brings water to life*

## Timber Materials List For 6 x 4 Metre Pool

Certikin Ref	Description	Length (mm)	Width (mm)	Thickness (mm)	Per Pool (Qty)
SPGPW11	Timber log-lap (notched twice)	3,600	110	45	18
SPGPW12	Timber log-lap base (tongue only, notched twice)	3,600	110	45	2
SPGPW13	Timber log-lap top drilled 4 holes (groove only, notched twice)	3,600	110	45	2
SPGPW02	Timber log-lap full wall base (tongue only, notched twice)	1,786	110	45	2
SPGPW04	Timber log-lap top drilled 3 holes (groove only, notched twice)	1,786	110	45	1
SPGPW03	Timber log-lap top drilled 4 holes top skimmer (groove only, notched twice)	1,786	110	45	1
SPGPW01	Timber log-lap (notched twice)	1,786	110	45	54
SPGPW05	Timber log-lap machined 2 return jets (notched twice)	1,786	110	45	1
SPGPW06	Timber log-lap machined 1 suction point (notched twice)	1,786	110	45	1
SPGPW07	Timber log-lap machined skimmer set bottom	1,786	110	45	1
SPGPW08	Timber log-lap machined skimmer pair (notched once) LH & RH sides	688	110	45	1
SPGPW09	Timber log-lap half base (tongue only, notched twice)	1,786	55	45	4
SPGPW10	Timber log-lap half top (groove only, notched twice)	1,786	55	45	4
SPGPR05	Timber 96 x 96 upper ring beam drilled 4 holes (long side)	3,541	96	96	2
SPGPR01	Timber 96 x 96 upper ring beam drilled 4 holes (skimmer panel)	1,723	96	96	1
SPGPR02	Timber 96 x 96 upper ringbeam drilled 3 holes (intermediate panels)	1,723	96	96	5
SPGPR03	Timber 96 x 96 upright posts drilled top	1,210	96	96	11
SPGPR04	Timber 96 x 96 skimmer support drilled twice	872	96	96	1
SPGPB02	Timber 200 x 50 lower ring beam drilled for corner plate	3,511	200	50	2
SPGPB01	Timber 200 x 50 lower base beam drilled for corner plate	1,729	200	50	6
SPGPT02	Timber 285 x 50 top deck surround (machined and drilled)	3,553	285	50	2
SPGPT01	Timber 285 x 50 top deck surround	1,733	285	50	6
SPGPS01	Pool external timber step set				1

## Essential Tools To Complete Build

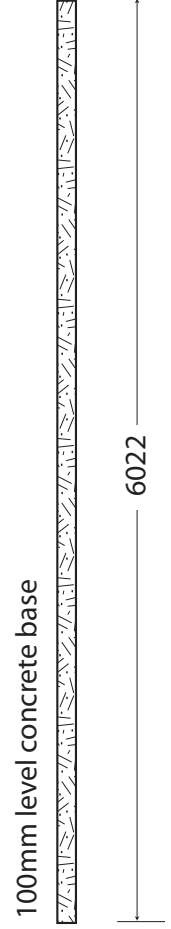
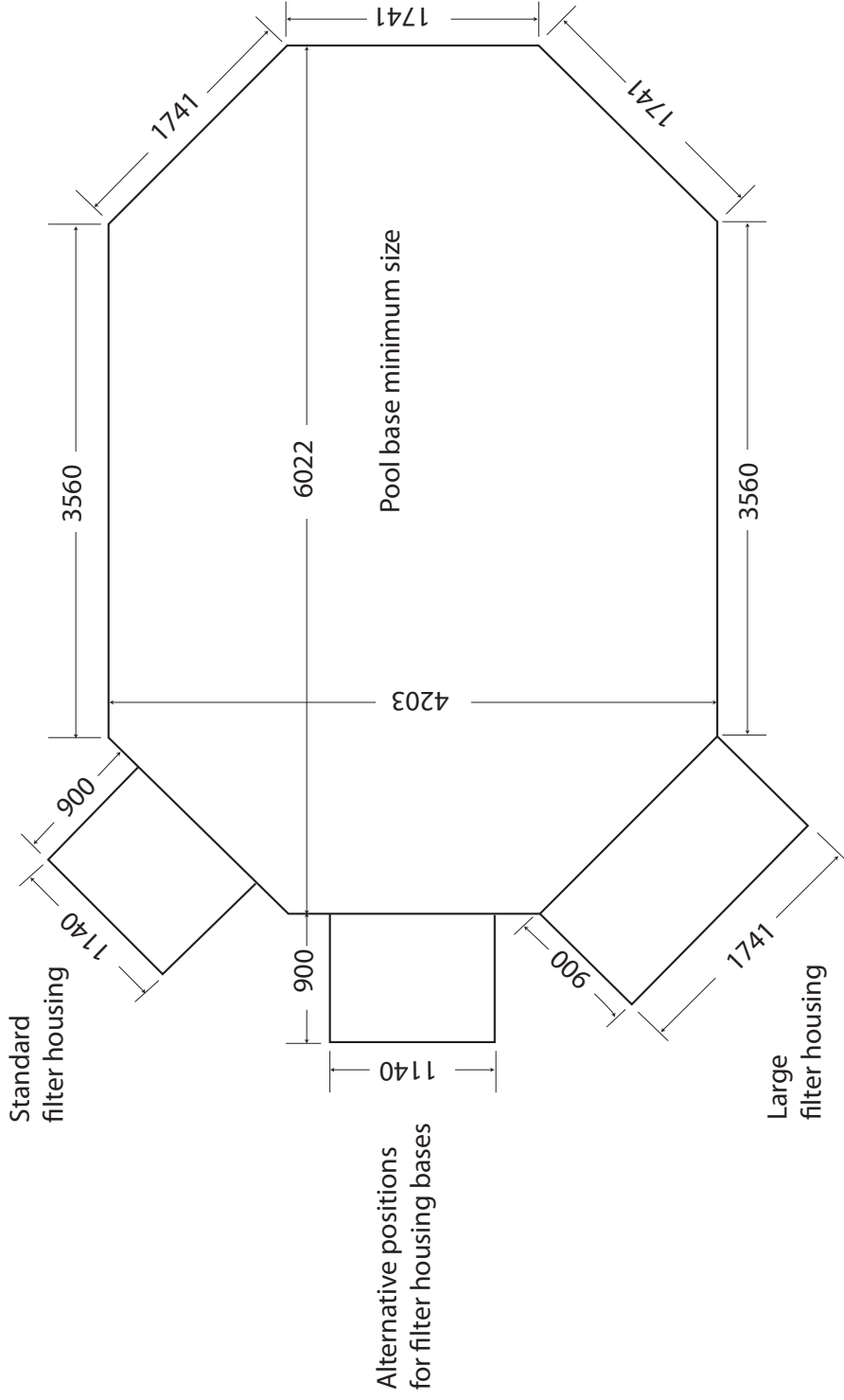
- Sharp knife
- Socket wrench and 19mm, 17mm, 13mm and 10mm socket
- Mallet
- Battery drill
- No.3 Pozi bit
- 6mm drill bit
- 12mm Auger bit (supplied with pool kit)



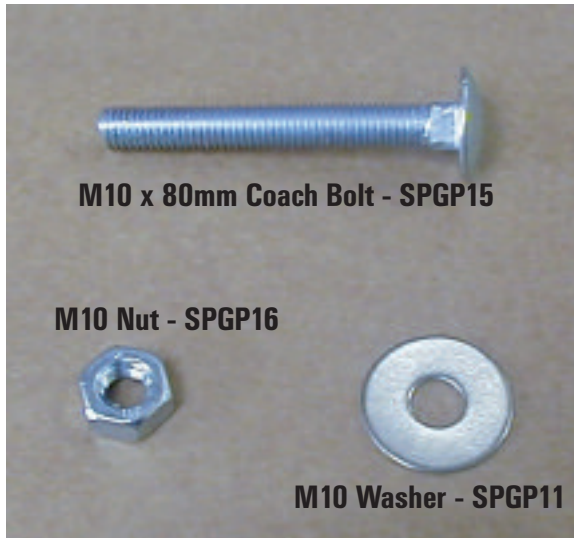
### Further Essentials

- A flat level concrete base is the best option
- A spirit level
- Spare (charged) battery for drill
- Roll of liner underlay tape - supplied
- 2 x large G-clamps
- An extra pair of hands. This is a two person build
- A good hose pipe to reach the pool
- Long ratchet straps

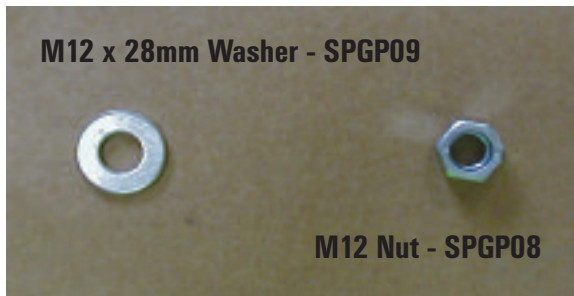
# Concrete Base Dimensions For 6m x 4m Wooden Pool



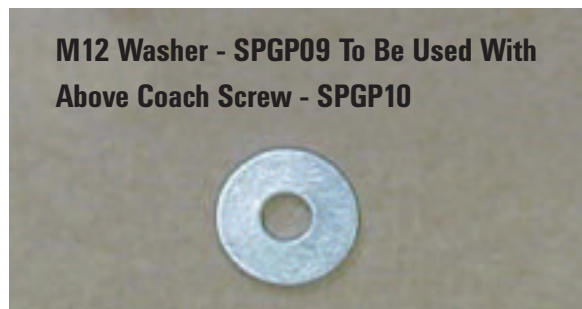
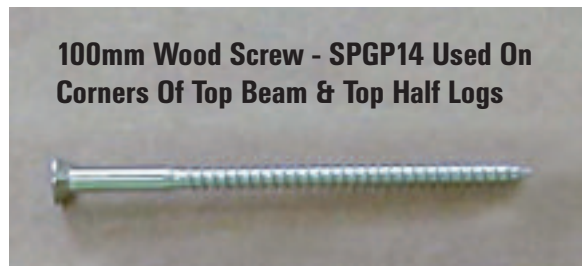
# Nuts, Bolts & Screws

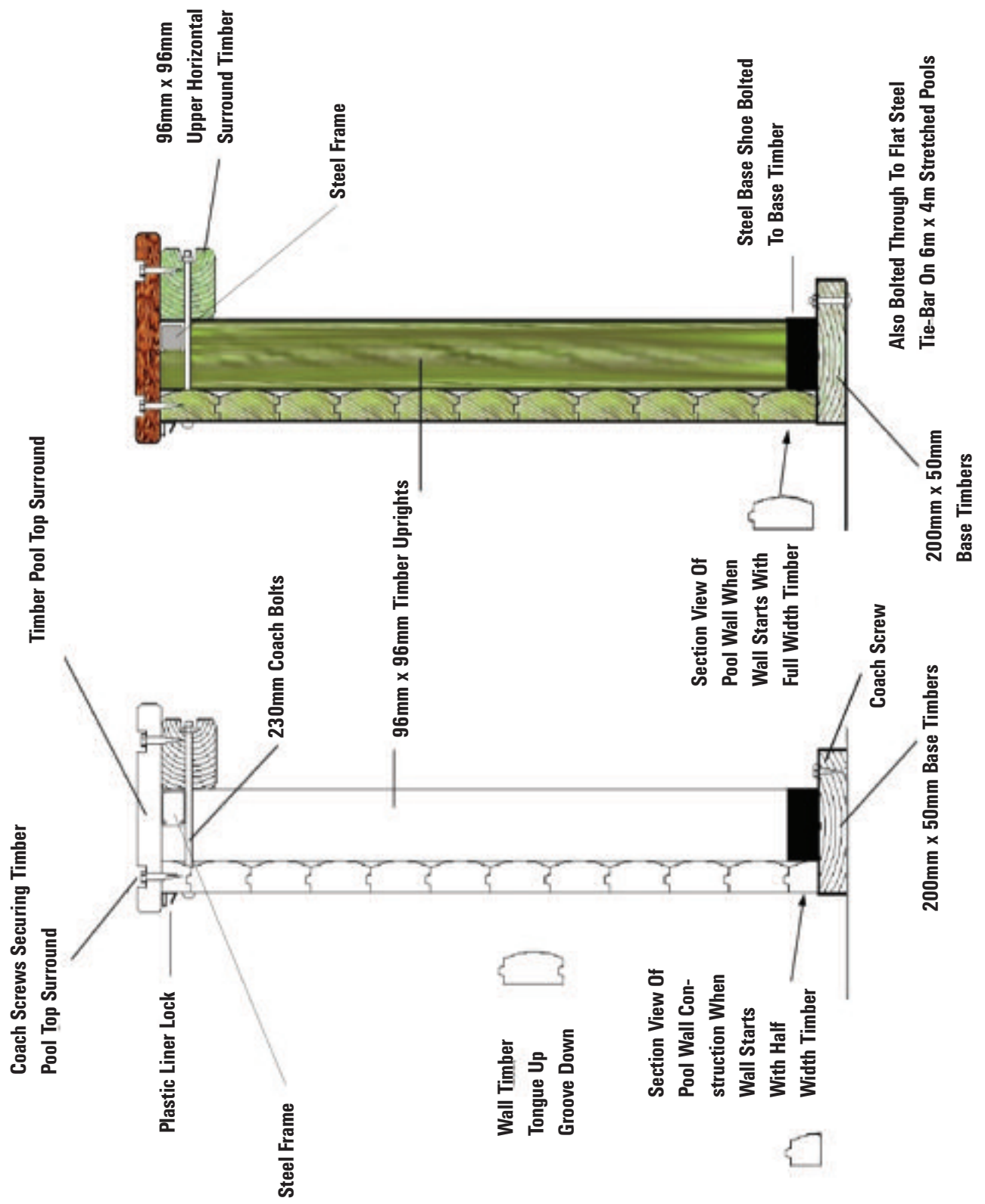


Washer Only Used For 6m x 4m Pools –Tie Bar  
Fixing To Up Right Post Base Shoe



Used At Top Of Post Up Rights & Top Beam Corners

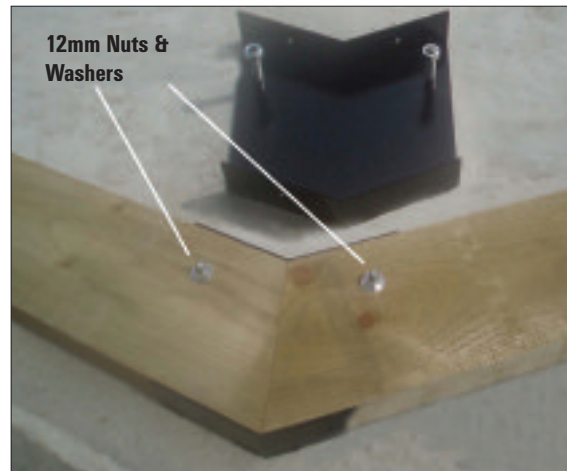




## Starting The Build Process



**STEP 1** -Lay out the eight 200mm x 50mm base timbers on the area where the pool is to be situated.



**STEP 2** -Fit the base corners using the 12mm nuts and washers.

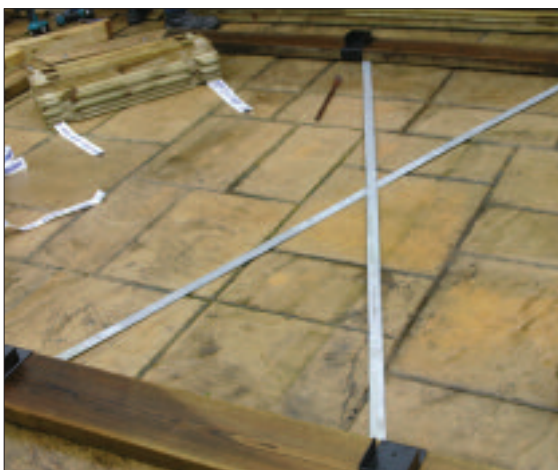
Please note: According to the time of the year and weather conditions, the timber can expand and become tight when fitting the base corner brackets. The timber may need to be planed slightly to adjust the fit. This will not affect the integrity of your pool structure.



**STEP 3** - Use G clamps as shown to aid fitting.



**STEP 4** - Screw the 6mm coach screws into the outside of the steel corner plates. Cover the screw head with the plastic caps. Drill 4mm pilot holes if needed.



**STEP 5** - Fit the flat steel tie-bars with the 80mm x 10mm bolts supplied by passing them through the side post feet as shown. Make sure the feet are spaced equally apart.



**STEP 6** - Line up the shoe and tie bar - drill through the timber and tie-bar with the M10 drill. Fit the coach bolt from underneath and secure with a nut and washer.



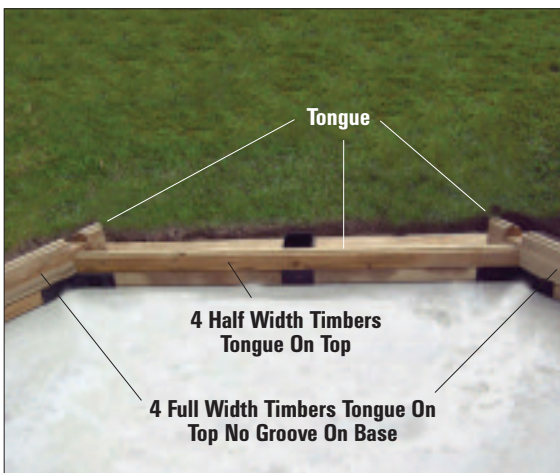
**STEP 7** - Position the remaining shoes at the centre of the short base timbers as shown. Do not fix at this stage.



Centre of base timber

**STEP 8** -The skimmer panel has two steel shoes. Use the skimmer support timber to help centre and position the steel shoes. Do not fix at this stage.

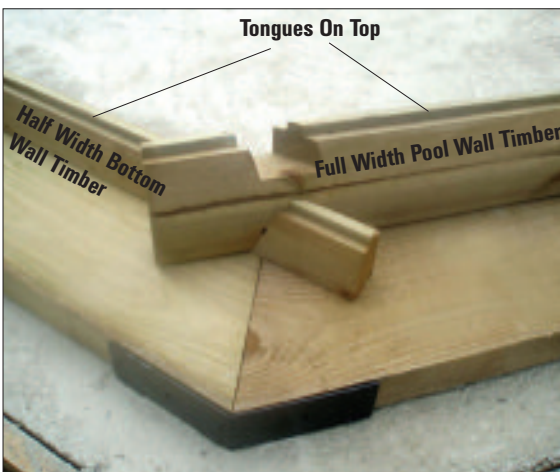
Please note: This is the side where the filtration pack will be positioned.



**STEP 9** - Lay the first row of pool wall timbers



**STEP 10** - Line up the inside edge of base timber with the first row of pool wall timbers.



**STEP 11** - Ensure that the pool wall timbers sit flat onto the base timbers.



**STEP 12** - Continue assembling the wall timbers, alternately aligning the corner joints. Make sure the tongues and grooves are in line before tapping down.

Please note: Make sure that the skimmer panel timbers are assembled in the correct order.





**STEP 13** - Tap the timbers down gently using a scrap piece of wood. Line up the tongues and the grooves before tapping.



**STEP 14** - When preparing the pool please remember to place the timbers so that the return inlets are on row 7 and the low suction point is on row 3.



**STEP 15** - Rest the skimmer on this aperture before fitting the top timber.



**STEP 16** - Where the skimmer is located on a corner wall the low suction is sited at 2.5 log and the returns are positioned at 5.5 log. The skimmer is 9.5 - 10.5 logs. See appendix A / B



**STEP 17** - Insert row 11 with the groove on the underside and the flat on the top.



**STEP 18** - Fit the skimmer to the pool wall with the 6 No10 x 1" screws provided.



**STEP 19** - Make sure gaskets have been fitted.



**STEP 20** - Fit the return inlet and the lower suction fittings.



**STEP 21** - Attach the return inlet pipe and valve section to the threaded unions protruding through the pool wall.

Please note: Make sure 'O' rings are seated correctly inside the unions.



**STEP 22** - The skimmer, return inlet and low suction in position. Viewed from the outside.



**STEP 23** - Screw the half timbers to the top of the pool wall with the 100mm stainless steel screws.



**STEP 24** - Repeat on other 3 sides with half timber tops.



**STEP 25** - Place the upright posts in the steel shoes with the holes facing outwards. Do not fix the uprights in the shoes at this stage.



**STEP 26** - Align the upright posts with the wall holes.



**STEP 27** - Loosely attach the 96mm x 96mm timbers to the long bolts protruding through the posts. Do not tighten fully at this stage.



**STEP 28** - Using the socket wrench firm up the nuts making sure that the washer is underneath. Do Not tighten fully at this stage.



**STEP 29** - Use a clamp to hold the timbers in position when drilling and fixing.

Please note: It is very important to level each corner before drilling.



**STEP 30** - Drill holes through the timber and pool wall and insert a 230mm x 12mm bolt through from the inside as shown.



**STEP 31** - Using straps around the ring beam whilst fitting makes the job easier.



**STEP 32** - View of the two corner bolts from above.



**STEP 33** - Align the corners and insert the 100mm stainless steel screws as shown top and bottom making sure that the corners are aligned and level.



**STEP 34** - Lay out the steel inner ring beam round the pool top. Fit the corner connecting brackets to one side of each length. Tighten bolts using 17mm spanner.



**STEP 35** - Insert bracket into next length of steel. Push up to meet the corner and tighten the bolts with the 17mm spanner.



**STEP 36** - The steel ring beam should lay tightly inside the timber ring beam all the way around the pool.



**STEP 37** - Screw the metal ring beam to the wooden ring beam using No12 x 2.5 screws SPGP38 and washers SPGP39.



**STEP 38** - Check that all the posts are upright. Tap the base left or right as necessary using the mallet.



**STEP 39** - Fix steel shoe to the base with 10mm coach screws and fit the plastic cap. Do not fix the post to the base shoe at this stage.

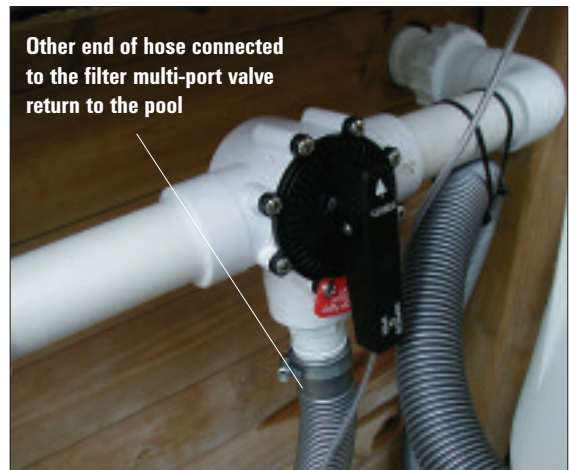
Please note: Pre drill the hole 6mm before fitting bolt if preferred.



**STEP 40** - Hold the skimmer support timber under the skimmer. Using the 100mm coach screws and washers, tighten with the socket wrench so that the timber supports the skimmer.

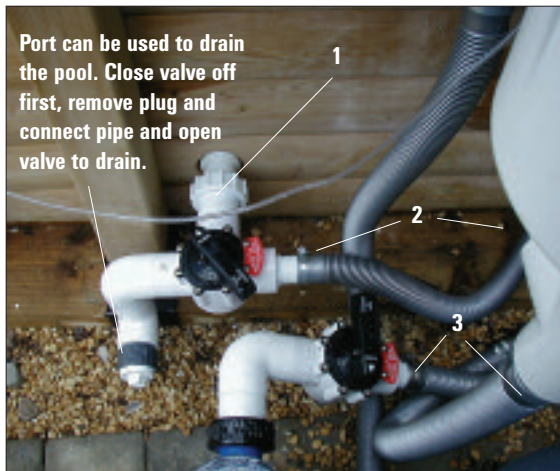


**STEP 41** - Assemble the filter and pumps onto the base following the separate instruction which come with the filter.

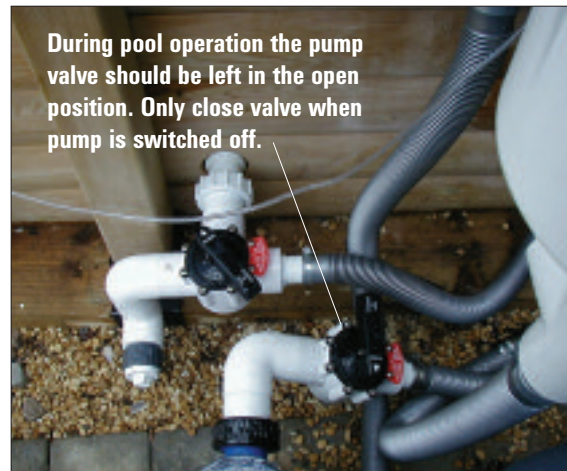


Other end of hose connected to the filter multi-port valve return to the pool

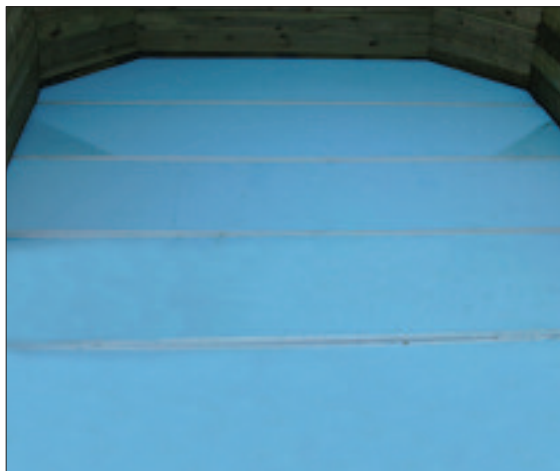
**STEP 42** - The valve should remain open during normal operation. Only close the valve off completely with pump turned off during maintenance.



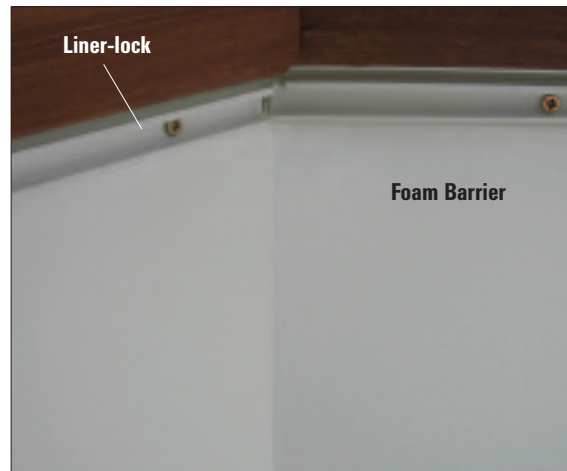
**STEP 43** - Connect 3 way valve assembly to the lower suction point (1). Connect hose to skimmer tee using jubilee clips (2). Connect hose from base of skimmer to pump inlet using jubilee clips (3).



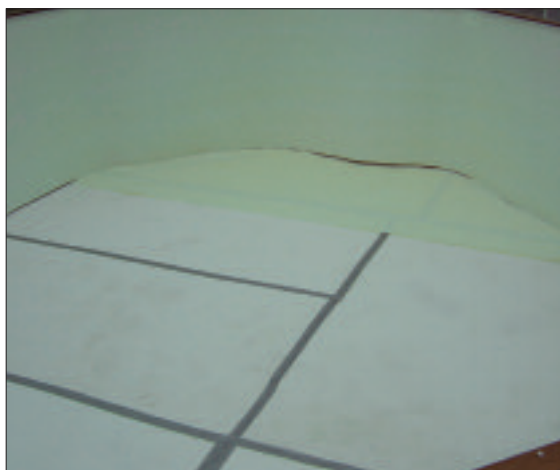
**STEP 44** - Increase the flow rate through the skimmer by turning the valve down. **Never turn off completely while swimmers are in the pool.** To remove the pump lid, switch off the pump and close the valve.



**STEP 45** - Fit the pre-cut Styrofoam base and tape the joints.



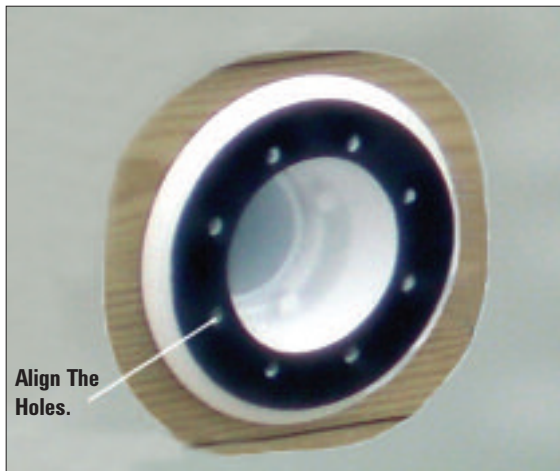
**STEP 46** - Fit the white plastic liner-lock level with the top of the timber wall. Work your way around the pool making sure that the liner-lock is tight into each corner. Trim the liner-lock with a saw if necessary. Trap the foam barrier under the liner-lock.



**STEP 47** - Lay the foam base followed by the thin foam barrier. Tape the joints for each layer.



**STEP 48** - Cut the foam 20mm clear and around the skimmer face and stick the black seal to skimmer face.



**STEP 49** - Cut the foam around the suction and return fittings. Fit the black foam rubber seals aligning the holes.



**STEP 50** - Completed foam barrier



**STEP 51** - Lay the liner in the pool as close to the position that the liner will be finally fitted. The liner is shaped to fit the pool, so make sure it's the correct way around. Take off your shoes when working with the liner otherwise you will mark it.

Tip: Lay the liner out in the sun. A warm liner is easier to fit.



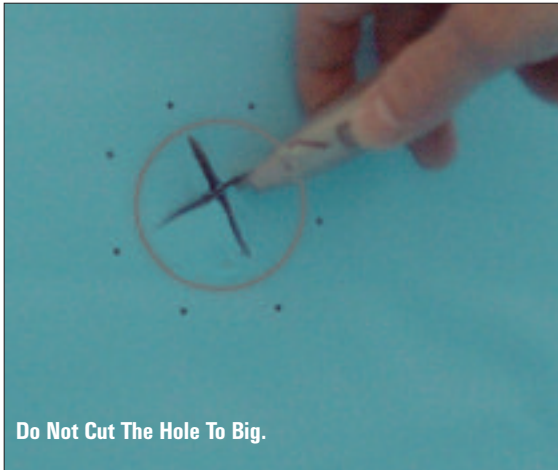
**STEP 52** - Start placing the liner in the top groove of the plastic liner-lock. Start from a corner and work your way round.



**STEP 53** - Push the top of the liner into the top groove of the liner-lock.

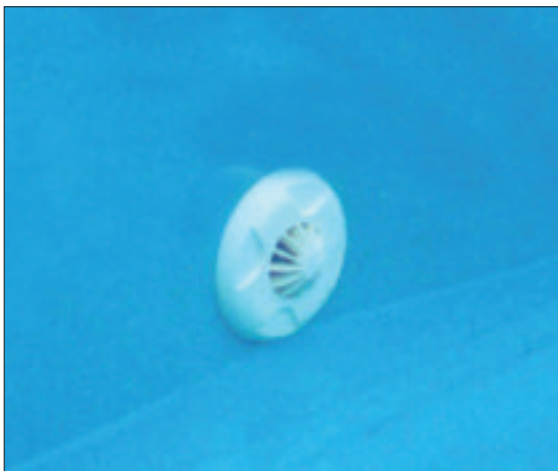


**STEP 54** - Continue pushing the liner into the liner-lock all around the pool and then push out the creases with your feet. **Do Not wear shoes for this procedure.**

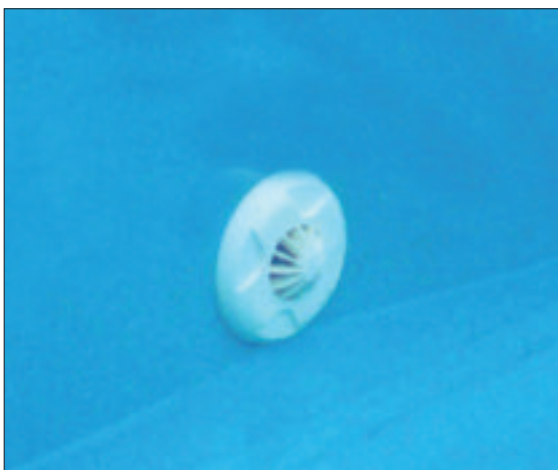


Do Not Cut The Hole To Big.

**STEP 55** - When the water reaches the lower suction point, cut a small cross by feeling the centre of the hole and pressing the liner against the fitting. Pierce the liner with a pen where the screw holes are for the clamp plate. Cut the 4 segments to create a round hole, the same diameter as the middle of the fitting.



**STEP 57** - Fit the low suction cover plate grill. Carry on filling the pool underneath the level of the return inlets. Work around the pool floor moving any creases in the liner outwards.



**STEP 57** - Fit the low suction cover plate grill. Carry on filling the pool underneath the level of the return inlets. Work around the pool floor moving any creases in the liner outwards.



**STEP 56** - Fit the plastic clamp plate with the screws provided. Tighten the screws evenly across opposites to create a good seal.

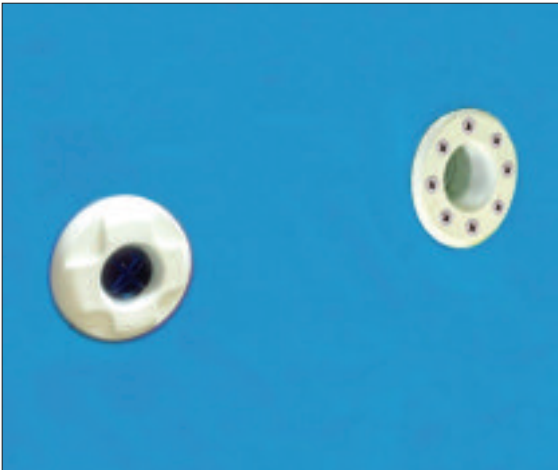


**STEP 58** - Cut the holes for the return pool water jets. Fix the screw on plates again tightening the screws evenly to create a good seal.



**STEP 58** - Cut the holes for the return pool water jets. Fix the screw on plates again tightening the screws evenly to create a good seal.





**STEP 59** - Fit the return water jet direction face plate.



**STEP 60** - Using the skimmer face plate mark the positions of the screw holes, screw on using even pressure and then cut around the inside of the plate to expose the entrance to the skimmer. Clip on cover plate to hide the screws and continue filling the pool until half way up the skimmer throat.



**STEP 61** - Go around the pool gently tightening the nuts and checking that the pool timbers are level. Do Not over tighten.



**STEP 62** - While the pool is filling with water, place the timber top surround into position around the pool.



**STEP 63** - Line up all 8 corners with an even overlap of the timber. Make use of the clamps to help hold the timbers into position. Using straps as per step 31, will also make this process easier.



**STEP 64** - When all of the top timbers are in position start by drilling a 6mm pilot hole into the timber underneath.



**STEP 65** - Insert the 10mm coach screws and washers and gently tighten down with the socket wrench. Repeat around the pool. Once complete fit the chrome caps.



**STEP 66** - Select the side where the steps are to be positioned. Stand the step flange brackets on the top surround at 500mm centres and mark the position of the holes.



**STEP 67** - Place the flange bracket so that the two holes shown are over the 96mm x 96mm timber under the top.



**STEP 68** - Drill 6mm pilot holes through the timber. Tighten down with M10 x 100mm coach screws.



**STEP 69** - Place the stainless steel covers and then assemble and fit the steps. Assembly instructions for the steps are in the steps box.



**STEP 70** - Screw in the two eye screws into the top of the underside of the wooden pool steps as shown above.



**STEP 71** - Lean the steps against the pool with the eyes under the 96 x 96 horizontal timber. Screw on the two spring bolts so as the bolt passes through the eye when the bolts are in the closed position.



**STEP 72** - The top deck is delivered untreated, we have supplied preservatives and a brush and the tops must be treated before a final coat is applied. We do not supply the finish coat because we leave the colour decision to the end user. We cannot guarantee against staining or mould if neither of the above are applied correctly. **Keep the top deck dry until treated.**

**Do not fix the upright posts to the steel base shoes as it is important that the pool timbers are allowed to dry and settle into the shoes.**

**The pool timbers have all been pressure treated and depending on the weather and temperature may remain damp for some time. Allow a reasonable period to dry.**

### Corner Skimmer Panel

	<b>Top Log 11 + 1/2</b>
	<b>10 + 1/2</b>
<b>Skimmer</b>	<b>9 + 1/2</b>
	<b>8 + 1/2</b>
	<b>7 + 1/2</b>
○ ○	<b>6 + 1/2</b>
<b>Return Outlets</b>	<b>5 + 1/2</b>
	<b>4 + 1/2</b>
	<b>3 + 1/2</b>
○	<b>2 + 1/2</b>
<b>Low Suction</b>	<b>1 + 1/2</b>
	<b>Base 1/2 Log</b>

### End Skimmer Panel

	<b>11</b>
	<b>10</b>
<b>Skimmer</b>	<b>9</b>
	<b>8</b>
○ ○	<b>7</b>
<b>Return Outlets</b>	<b>6</b>
	<b>5</b>
	<b>4</b>
	<b>3</b>
○	<b>2</b>
<b>Low Suction</b>	<b>1</b>

## Optional Extras



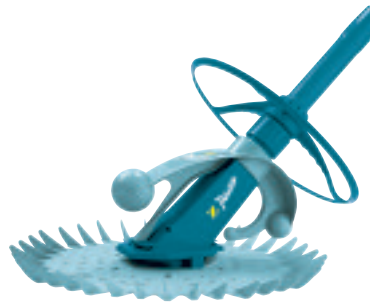
**Compac Heat Pump**  
The most economical and environmentally friendly heating solution.



**Fast Lane Counter Current Unit**  
The Fast Lane is a retro-fit unit and is ideal for exercise and fun in your timber pool. You swim against a water current for a great work-out.

### Nature 2 Fusion

Nature 2 prevents algae and clarifies the water. Less fuss, and more time to relax and enjoy your pool



### Baracuda Pacer

Helps to keep the water in your pool clean and bright. Easy to use and operate.



### Swimfresh Pool Chemicals

Chemicals available to keep your pool water looking clear and clean.



### Walu Woodstar Above Ground Pool Cover

This safety cover is easy to install and operate and is available in four colours.



### Electro Heaters

Electric heaters suitable for use on your wooden pool.

Contact your Certikin stockist for prices and availability.

## 6m x 4m Stretched Octagonal Pool





# Certikin

Endless Summer Wooden Pools  
Certikin International Limited  
Unit 9, Witan Park, Avenue 2, Station Lane Industrial Estate  
Witney, Oxfordshire OX28 4FJ

Tel: 01993 778855 Fax: 01993 778620  
[www.certikin.co.uk](http://www.certikin.co.uk) / [www.endlesssummer.co.uk](http://www.endlesssummer.co.uk)